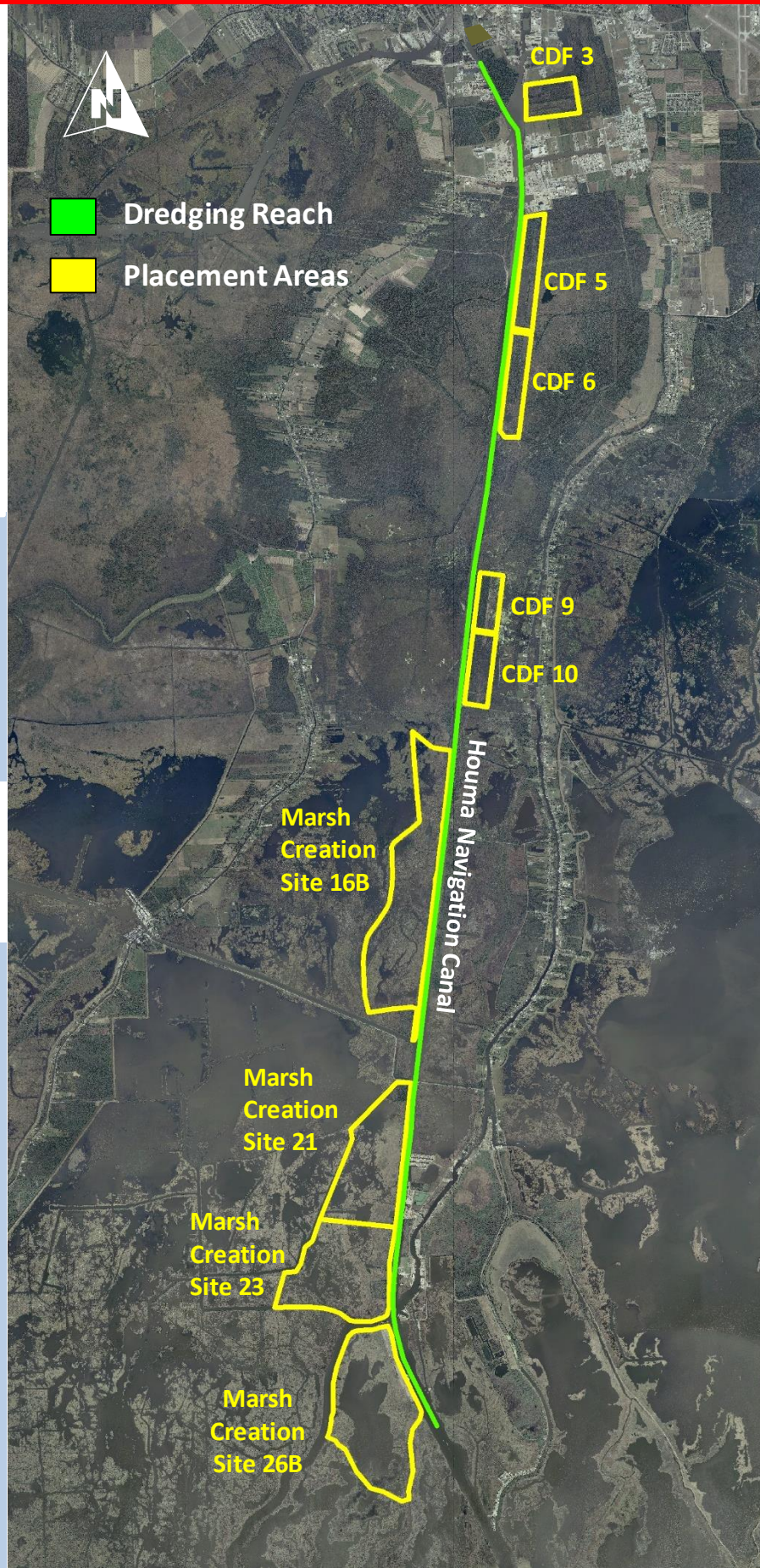


HOUMA NAVIGATION CHANNEL INLAND



TERREBONNE, LA.



FY 2022 MAINTENANCE DREDGING

PROJECT: Houma Navigation Canal
SUBPROJECT: Inland Reaches
OPERATIONS MANAGER: Ray Newman
PHONE: (504) 862-2050
LOCAL SPONSOR: Terrebonne Parish
Consolidated Government, Houma, LA
COASTAL ZONE CONSISTENCY: C20210110

DESCRIPTION OF WORK:

Maintain a -15' x 150' channel from
Mile 36.0 to Mile 19 (with an
additional 2' of advance maintenance)

DREDGING FREQUENCY: 10 years

LAST DREDGED: 2006

TYPE OF DREDGE: Cutterhead

ESTIMATED QUANTITY:

200,000-400,000 CY

ESTIMATED COST: \$3,500,000 -
\$5,500,000

ADVERTISE: Apr 2022

OPEN BIDS: Jun 2022

AWARD: Jul 2022

START WORK: Nov 2022

DURATION: 120 days

DREDGING REACH: Mile 19.0 to 36.0 non
continuous

DISPOSAL TYPE: wetland creation, upland
confined CDF

REMARKS:

SEDIMENT CHARACTERISTICS: